

D

C

B

A

1

2

3

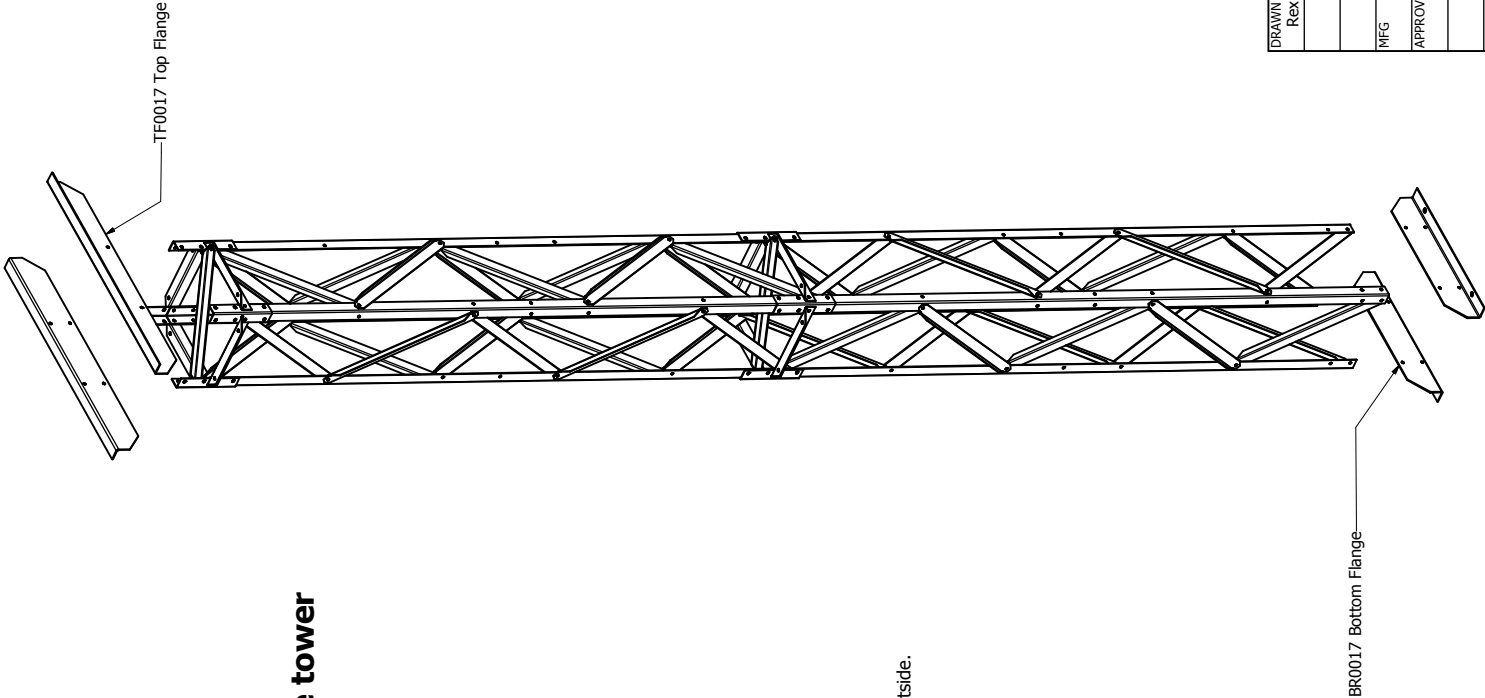
4

# T17171 17 x 17 single brace tower

Make sure that on all four sides the Side Braces form W's all the way.

At the end of the sections all the side braces go on the inside to allow tower tie and tie braces to fit.

It is best to put all bolts out with the nuts on the outside.

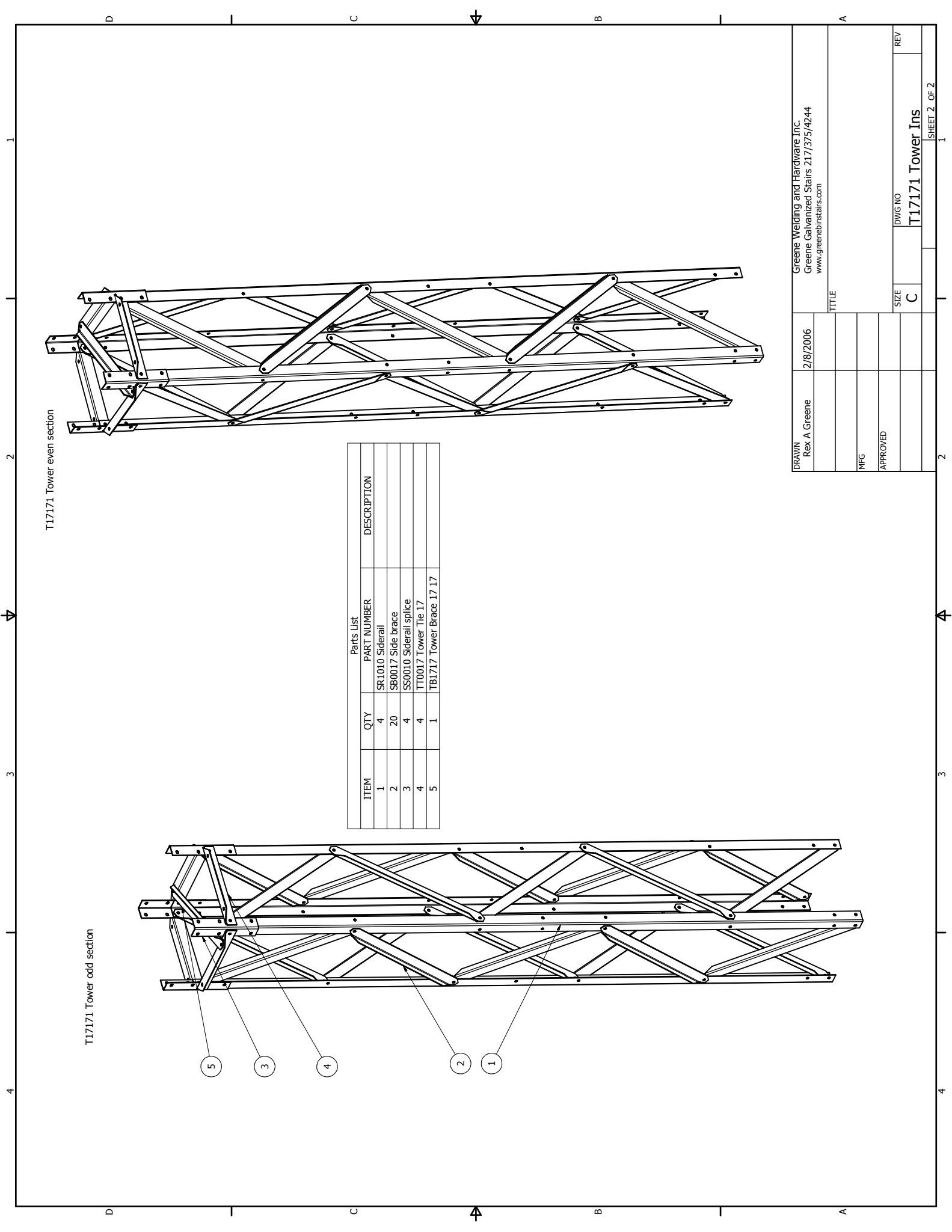


|                       |          |  |     |
|-----------------------|----------|--|-----|
| DRAWN<br>Rex A Greene | 2/8/2006 | Greene Welding and Hardware Inc.<br>Greene Galvanized Stairs 217/375/4244<br>www.greenebinstairs.com |     |
| MFG                   |          | TITLE  |     |
| APPROVED              |          | SIZE<br>C  | REV |
|                       |          | T17171 Tower Ins   |     |
|                       |          | DWG NO   |     |
|                       |          | REV  |     |

2

3

4



T17171 Tower even section

T17171 Tower odd section

| Parts List |     |                          |             |
|------------|-----|--------------------------|-------------|
| ITEM       | QTY | PART NUMBER              | DESCRIPTION |
| 1          | 4   | SR1010 Siderail          |             |
| 2          | 20  | SB0017 Side brace        |             |
| 3          | 4   | SS0010 Siderail splice   |             |
| 4          | 4   | TT0017 Tower Tie 17      |             |
| 5          | 1   | TB1717 Tower Brace 17 17 |             |

|                       |          |  |                            |
|-----------------------|----------|--|----------------------------|
| DRAWN<br>Rex A Greene | 2/8/2006 | Greene Welding and Hardware Inc.<br>Greene Galvanized Stairs 217/375/4244<br>www.greenebinstairs.com |                            |
| MFG                   |          | TITLE  |                            |
| APPROVED              |          | SIZE<br>C  | DWG NO<br>T17171 Tower Ins |
|                       |          | REV  | 1                          |